

## About Community Legal Services of Mid-Florida (CLSMF)

*The mission of CLSMF is to provide access to justice through high quality legal assistance to low-income persons.*

Community Legal Services of Mid-Florida, Inc. provides free legal assistance to eligible low-income persons in civil matters (we do not provide legal assistance in criminal or traffic matters).

CLSMF provides community education seminars and detailed informational brochures on the major areas of law we practice. Please see the back of this brochure for a complete listing of offices.



The Florida Bar Foundation, with *Interest on Trust Accounts* program funding, provides support for this service.



## Community Legal Services of Mid-Florida Offices:

**\*BREVARD: 1-866-469-7444**

**CITRUS & SUMTER**  
106 N. Osceola Ave., Inverness, FL 34450  
(352) 726-6592 — CITRUS  
1-800-984-2918— SUMTER

**FLAGLER: 1-800-405-1417**

**HERNANDO: 1-866-801-5566**

**LAKE— (352) 343-6351**  
226 West Main St., Tavares, FL 32778

**MARION— (352) 629-6257**  
2300 SE 17th ST. Suite 201  
Ocala, FL 34471

**\*ORANGE — (407) 841-7777**  
122 E. Colonial Drive, Suite 200  
Orlando, FL 32801

**OSCEOLA — (407) 933-1791**  
800 North Main St., Kissimmee, FL 34744

**PUTNAM: (386) 385-0928**  
216 S. 6th Street, Palatka, FL 32177

**\*SEMINOLE: (407) 322-6673**

**VOLUSIA — (386) 258-5600**  
128 Orange Ave., Suite 100,  
Daytona Beach, FL 32114  
Client toll-free number: 1-800-363-2357

**ADMINISTRATIVE OFFICE: (386)506-5396**

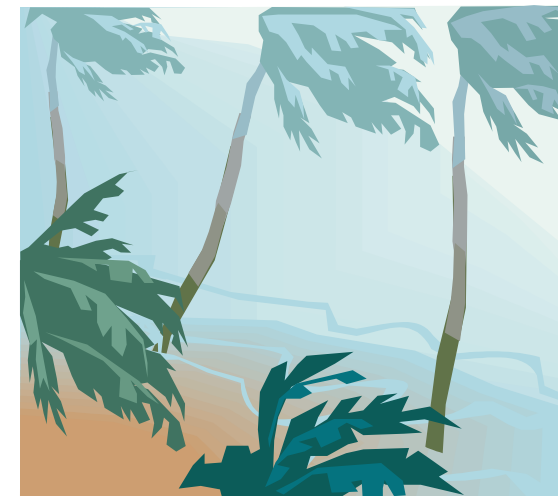
**info@clsmf.org**  
**http://www.clsmf.org**

**\*Offices currently not offering Family Law services**



Community Legal Services of Mid-Florida

## **Frequently Asked Questions**



## **DISASTER UNEMPLOYMENT ASSISTANCE**

### **1. I lost my job after the disaster. Am I eligible for Disaster Unemployment Assistance (DUA)?**

If you are unemployed because of the disaster, you may be eligible for Disaster Unemployment Assistance (DUA) even if you do not qualify for regular Unemployment Compensation (UC). For example, you may be eligible for DUA if:

- A. You became unemployed as a direct result of the disaster; or
- B. You are unable to reach your workplace because of the disaster; or
- C. You were supposed to start work at a new job, but you lost the job because of the disaster; or
- D. You became the breadwinner for your household after the head of household died because of the disaster; or
- E. You cannot work because of an injury caused by the disaster.

### **2. Can I qualify for Disaster Unemployment Assistance if I am self-employed?**

Yes, if you are self-employed, you may qualify for DUA if:

- A. You became unemployed as a direct result of the disaster; or
- B. You are unable to reach the place where you perform your services; or
- C. You were supposed to start self-employment but you don't have a place to perform the work because of the disaster; or
- D. You cannot work because of an injury caused by the disaster.

### **3. What else do I need to show to be eligible for DUA benefits?**

You will also need to show that:

- A. You worked enough during the last calendar year; and
- B. You have registered for work at your local One-Stop Center and are able and available for work, unless:
  - You were injured as a result of the hurricane and are unable to work because of the injury; or
  - You were self-employed before the hurricane, and you are trying to get your business back in order

### **4. Are immigrants eligible for DUA?**

Yes, if you have valid work papers and are a U.S. citizen, lawful permanent resident (green card holder), refugee, asylee, Cuban/Haitian entrant, parolee for one year or more, conditional entrant, victim of domestic violence, or you have been granted withhold of deportation.

### **5. Where do I apply for Disaster Unemployment Assistance?**

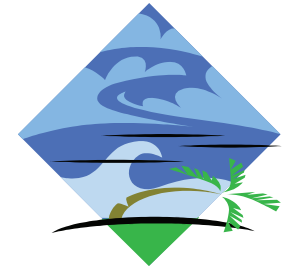
There are three ways to apply:

- By telephone - Call 800-204-2418
- On the internet - at [www.floridajobs.org](http://www.floridajobs.org).
- The One-Stop Center nearest you has a computer you can use to apply.
- Whichever way, make sure to let them know that you are filing a disaster-related claim.



### **6. When should I apply for DUA?**

You must file for DUA within 30 days after the disaster, unless the application deadline is extended. You should apply as soon as possible since you may have to wait three weeks before your first check is sent to you. If you were not able to apply before the deadline, please contact our office for help.



### **7. How long can I receive DUA benefits?**

You can only receive DUA benefits for 26 weeks (6 months) after a disaster.

### **8. What if I am told that I am not eligible for DUA benefits?**

You have the right to appeal the decision within twenty (20) days from the date on the Notice of Determination. Your case will be scheduled for a hearing before an Appeals Referee. If you need a translator, you should ask for one right away. At the hearing, you will need to explain to the Appeals Referee why the decision was wrong and you are entitled to DUA. You should bring witnesses and documents with you to prove your case.

**For more information or assistance, please contact our nearest office.**